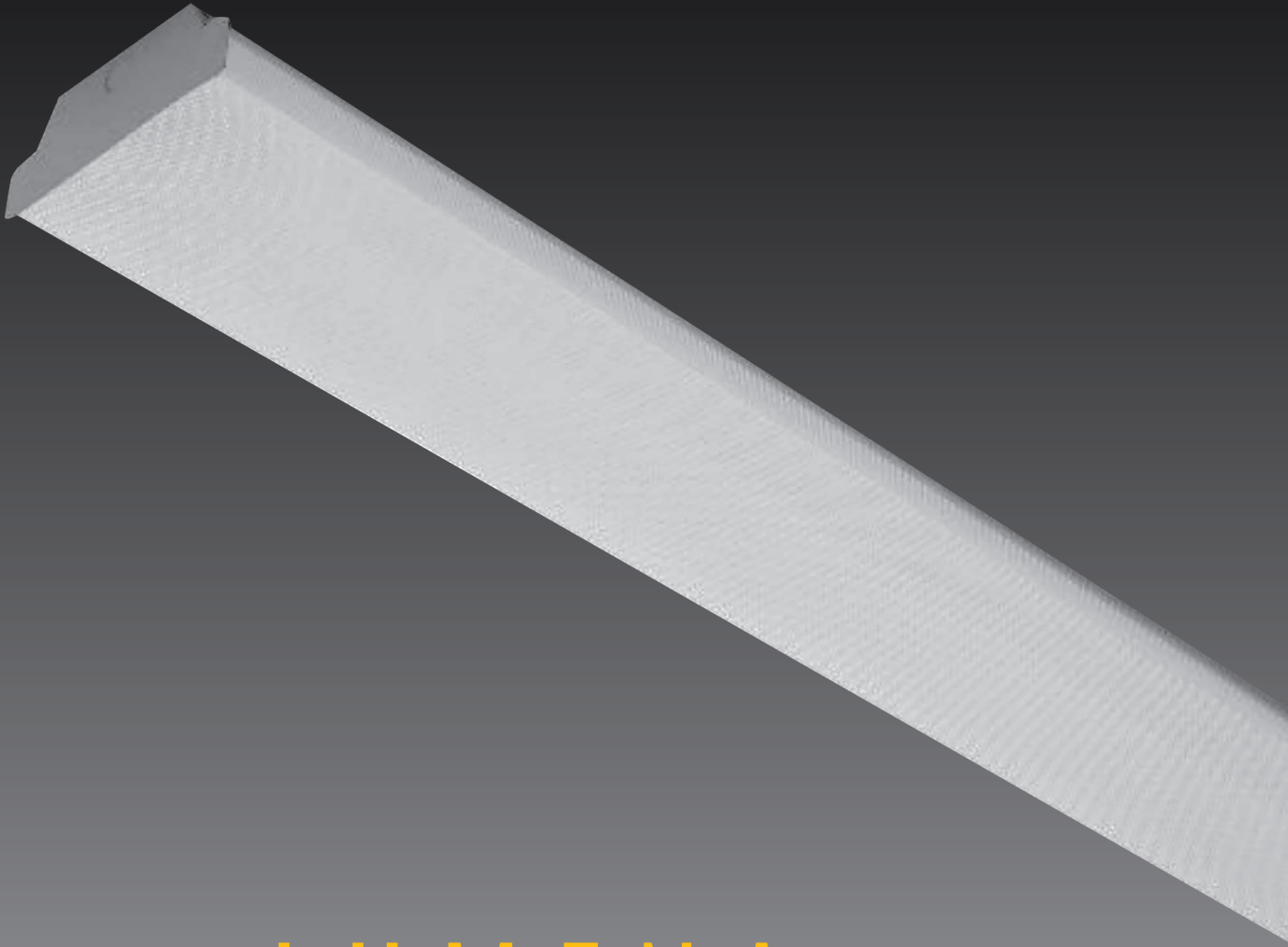


INTRINSIX



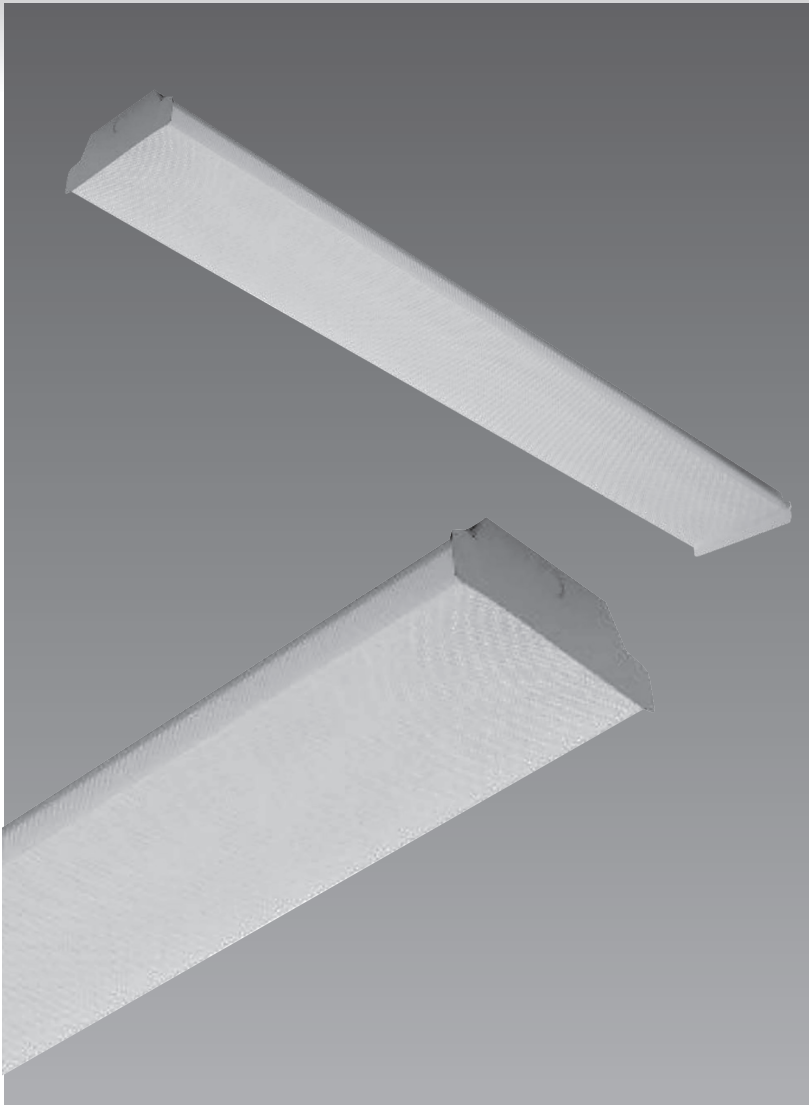
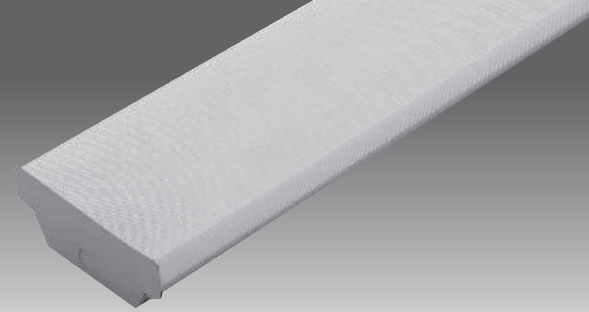
LUMENA

FIELD SELECTABLE WRAP LIGHT

PRODUCT PROFILE

# LUMENA

## FIELD SELECTABLE WRAP LIGHT



### Description

The LUMENA Wrap Light is ideal in damp locations and ambient temperatures from -4°F to 140°F and provides easy installation in new construction or retrofit applications.

The long-life LEDs provide 196,000 hours of operation with at least 70% of initial lumen output (L70), and 60,000 hours with at least 90% of initial lumen output (L90).

Lumena is field selectable offering 3500k (warm/neutral white), 4000k (neutral white), and 5000k (cool white) color temperatures.

Lumena provides a range of 4,100 to 5,800 nominal lumens and 132 to 154 lumens per watt (LPW) dependent on color with total harmonic distortion of <20%.

The product is constructed of a steel housing with PMMA lens. Optional emergency drivers and occupancy sensors are available.

### Specifications

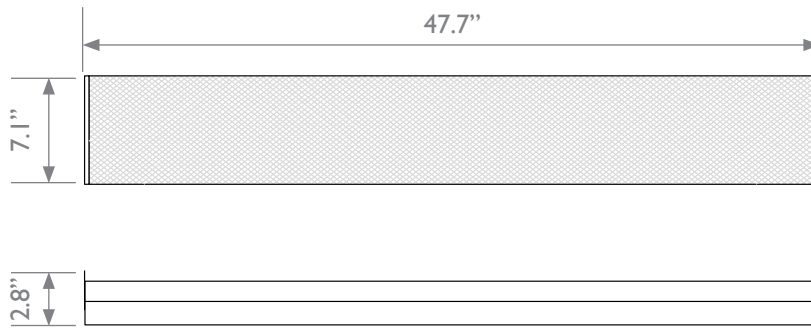
- Output Power: 28-41W
- Dimming: 0-10V
- CRI: >80
- Voltage: 120-277VAC, 50/60Hz
- Power Factor: >0.90
- Operating Temp: -4°F to 140°F
- IP Rating: IP20
- Warranty: 50,000 Hours/5 Years

### Wrap Light LED Fixture Details

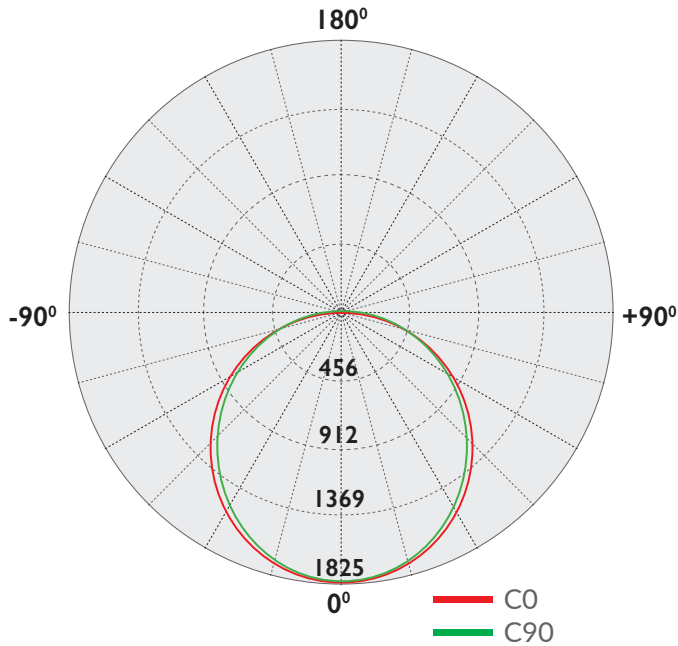
Product Number	Watts (W)	Lumen Output Selectable	CCT (K) Selectable	Efficacy (Lm/W)	Power Factor	Dimming Power	Operating Temperature	IP Rating	Product ID Code
IX-WRP-30S	30/28/30	4155/4336/4233	3500/4000/5000	138/154/141	> 0.90	0-10V	-4° to 140°F	IP20	TBA
IX-WRP-35S	35/32/35	4750/4932/4817	3500/4000/5000	135/152/137	> 0.90	0-10V	-4° to 140°F	IP20	TBA
IX-WRP-41S	41/39/41	5423/5837/5503	3500/4000/5000	132/149/134	> 0.90	0-10V	-4° to 140°F	IP20	TBA



## Product Dimensions



## Distribution Diagram



Intertek

The ETL Listed mark is an indicator of the product's compliance with safety regulations, recognized and accepted by the UL and CSA marks. As Intertek's ETL subjects' products to UL standards for safety, products marked as ETL Listed meet the same ridged criteria as marked with UL Lister or UL Recognized. Intertek ETL is a Nationally Recognized Testing Laboratory (NRTL) recognized by the Occupational Safety and Health Administration (OSHA).



The Federal Communications Commission (FCC) is an independent agency of the United States government that was created to regulate all forms of telecommunication inside of the U.S. including the radio frequency (RF) of electronics. Our products are fully tested ensure that they will not electromagnetically interfere with other products nor cause risk to the public as required by law.