

# INTRINSIX



COMMERCIAL LIGHTING  
PRODUCT CATALOGUE

---

# HUMBLE BEGINNINGS.

How many great companies start.

There is no argument that people do business with companies they like and trust. Intrinsic instills trust and loyalty among our customers by simply serving them with the right solutions.

Intrinsic was launched in 2018, initially selling only wiring devices, but quickly expanded into high quality and affordable lighting solutions at the request of our quickly-growing customer base. By listening to customer demand, we not only developed trust, but we created genuine relationships with our clients. We have made it part of our company culture to always seek new and valuable ways that we can serve our customers by adding value through saving them money, and providing a level of service second to none.

After a few years of experience and a lot of R&D, Intrinsic has built a full inventory and staff to better serve the marketplace. We stock solutions for commercial, industrial, residential, specialized and customized lighting, plus everything from basic wall switches to sophisticated PoE, IoT and wireless Bluetooth lighting control systems. Whatever your need, Intrinsic has the background experience, availability and buying power to suit all of your lighting requirements.



Visit:

[www.intrinsiclighting.com](http://www.intrinsiclighting.com)



Telephone:

224-353-4084



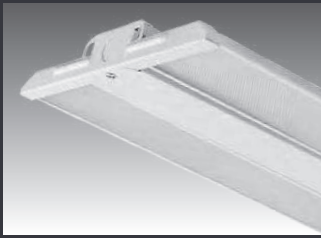
Email:

[sales@intrinsiclighting.com](mailto:sales@intrinsiclighting.com)



9550 W. Higgins Road  
Rosemont, IL 60018

## INTERIOR



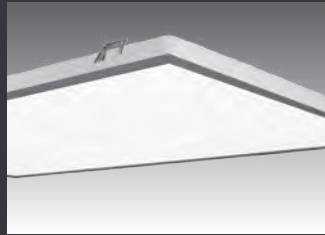
**AURORA**  
LINEAR HIGH BAY  
PAGE 4



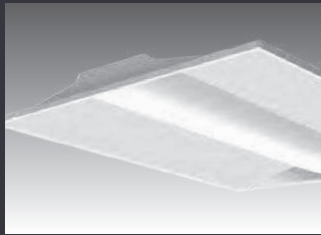
**ALTITUDE**  
HIGH BAY FIXTURE  
PAGE 5



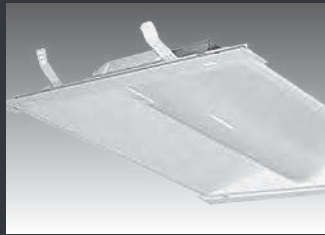
**CIRCA**  
ROUND HIGH BAY  
PAGE 6



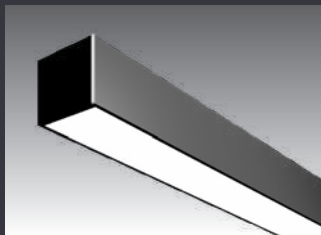
**VISTA**  
BACKLIT FLAT PANE  
PAGE 7



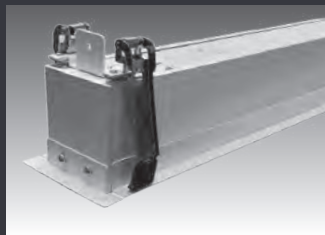
**STRATA**  
TROFFER LIGHT  
PAGE 8



**ASTRAL**  
TROFFER RETROFIT  
PAGE 9



**LINEA X**  
ARCHITECTURAL STRIP  
PAGE 10

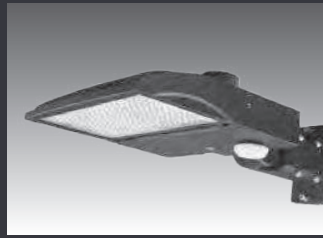


**LINEA R**  
RECESSED SLOT FIXTURE  
PAGE 12



**HORIZON**  
STRIP LIGHT  
PAGE 14

## EXTERIOR



**SIRIUS**  
SHOE BOX LIGHT  
PAGE 15



**COMET**  
SHOEBOX FLOOD  
PAGE 16



**ECLIPSE**  
SEMI CUTOFF  
PAGE 18



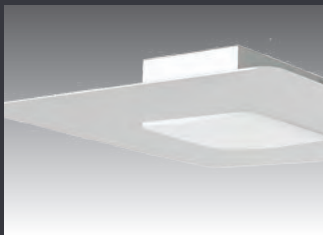
**ECLIPSE**  
FULL CUTOFF  
PAGE 19



**ECLIPSE MINI**  
COMPACT WALL PACK  
PAGE 20



**COMET-MINI**  
COMPACT FLOOD LIGHT  
PAGE 21



**SOFCAN**  
RETROFIT CANOPY  
PAGE 22

## ACCESSORIES



**PIR SENSOR**  
SIDE MOUNT  
PAGE 23



# AURORA

## LINEAR LED HIGH BAY LIGHT



### Description

Intrinsix AURORA Led High Bay Lighting is capable of providing lighting to spaces with ceilings higher than 20Ft with high lumen output. These areas would include airport hangers, factories, and school gyms.

AURORA LED linear high bay lighting produces a wide light distribution allowing for greater range. It also gives you the freedom to control the brightness with the integrated Advanced Lighting Control.

With a lifespan of over 50,000 working hours, the AURORA LED lights are a perfect replacement for traditional fluorescent lights that easily get worn out. They will work for a longer period of time with very little maintenance costs.

### Specifications

- CCT: 4000K or 5000K
- Dimming: 0 to 10V
- Voltage: 120 to 277V, 50 to 60Hz
- Wattage: Selectable
- Efficacy: 140Lm Per Watt
- Operating Temp: -22°F to 122°F
- IP Rating: IP20
- Power Factor: >0.90
- DLC Listing: Premium
- Lifetime: 50,000 hours
- Warranty: 5 years



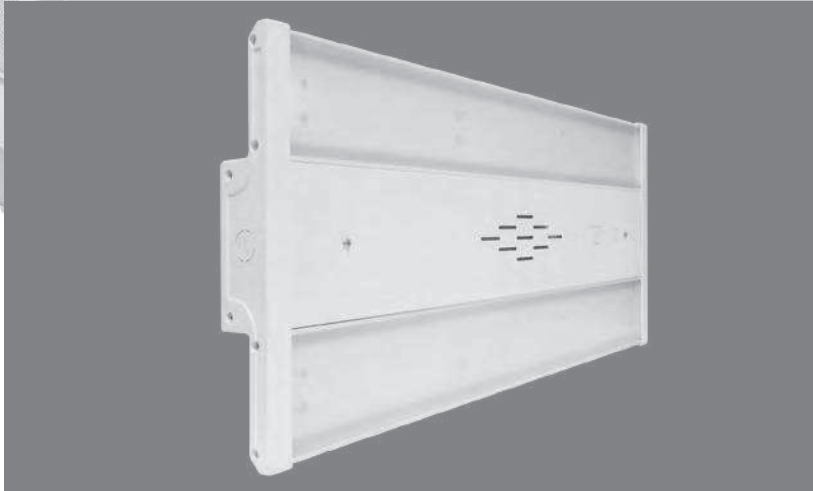
### Fixture Details

Product Number	Watts (Selectable)	CCT(K) (Selectable)	CRI	Efficacy Lm/W	Lumen Output (Lm)	Operating Temperature	IP Rating	DLC Product ID
IX-LHBX-85S-40/50L0	85/75/65	4000/5000	>80	140	11,900/10,500/9,100	-22°F to 122°F	IP20	S-WY61NE
IX-LHBX-110S-40/50L0	110/90/70	4000/5000	>80	140	15,400/12,600/9,800	-22°F to 122°F	IP20	S-6LQ48E
IX-LHBX-130S-40/50L0	130/110/90	4000/5000	>80	140	18,200/15,400/12,600	-22°F to 122°F	IP20	S-EV6ASP
IX-LHBX-165S-40/50L0	165/150/130	4000/5000	>80	140	23,100/21,000/18,200	-22°F to 122°F	IP20	S-JSFZBX
IX-LHBX-220S-40/50L0	220/200/180	4000/5000	>80	140	30,800/28,000/25,200	-22°F to 122°F	IP20	S-YGRE1W
IX-LHBX-300S-40/50L0	300/275/255	4000/5000	>80	140	42,000/38,500/35,700	-22°F to 122°F	IP20	S-EW2OMB



# ALTITUDE

## HIGH BAY



### Description

Intrinsic ALTITUDE LED High Bay Lighting is capable of providing lighting to spaces with ceilings higher than 20Ft with high lumen output. These areas would include airport hangers, factories, and school gyms.

ALTITUDE LED linear high bay lighting produces a wide light distribution allowing for greater range. It also gives you the freedom to control the brightness with optional PIR sensor with daylight harvesting and occupancy sensor.

With a lifespan of 50,000 working hours, the ALTITUDE LED lights are a perfect replacement for traditional fluorescent lights that easily get worn out. They will work for a longer period of time with very little maintenance costs.

### Specifications

- CCT: 5000K
- Dimming: 0 to 10V
- Voltage: 120 to 277V, 50 to 60hz
- Efficacy: 140lm Per Watt
- Operating Temp: -4°F to 122°F
- IP Rating: IP40
- Power Factor: >0.90
- PIR Sensor: Optional with daylight harvesting and occupancy, available in each wattage (see page 23)
- DLC Listing: Premium
- Lifetime: 50,000 hours
- Warranty: 5 years

### Fixture Details

Product Number	Dimming	Watts	CCT(K)	CRI	Efficacy Lm/W	Lumen Output Temp (Lm)	Operating Temperature	IP	DLC Product ID
IX-LHB02-110DM-50L3	0 to 10v No sensor integration	110	5000	>80	140	15,400	-4°F to 122°F	IP40	PD1KDDQX
IX-LHB02-110SD-50L3	0 to 10v	110	5000	>80	140	15,400	-4°F to 122°F	IP40	PD1KDDQX
X-LHB02-160DM-50L3	0 to 10v No sensor integration	160	5000	>80	140	22,400	-4°F to 122°F	IP40	PAJCY7E6
IX-LHB02-160SD-50L3	0 to 10v	160	5000	>80	140	22,400	-4°F to 122°F	IP40	PAJCY7E6
IX-LHB02-220DM-50L3	0 to 10v No sensor integration	220	5000	>80	140	30,800	-4°F to 122°F	IP40	PW802RI
IX-LHB02-220SD-50L3	0 to 10v	220	5000	>80	140	30,800	-4°F to 122°F	IP40	PW802RI



# CIRCA

## ROUND HIGH BAY LED LIGHT



### Description

Intrinsix CIRCA Led High Bay Lighting is capable of providing lighting to spaces with ceilings higher than 20Ft with high lumen output. These areas would include airport hangars, factories, and school gyms.

CIRCA LED round high bay lighting produces a cone-shaped beam, giving you a more focused light. It also gives you the freedom to control the brightness.

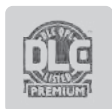
With a lifespan of 50,000 working hours, LED lights are a perfect replacement for traditional lights that easily get worn out. High Bay LED lights will work for a longer period of time with very little maintenance costs.

### Specifications

- Input Voltage: 120 to 277V
- Dimming: 0 to 10V
- Wattage: 100W/150W/200W/240W/300W Selectable
- Color: 4000K/5000K Selectable
- DLC Listing: Premium
- Lifetime: 50,000 hours
- Warranty: 5 years

### Fixture Details

Product Number	Watts (Selectable)	CCT(K) (Selectable)	CRI	Efficacy	Lumen Output Lm (W)	Operating Temperature	IP	DLC Product ID
IX-RHB-100S-40/50L0	60/80/100	4000/5000	>80	140	8673/11564/14455	-40°F to 122°F	IP65	100 S-8A4Q50
IX-RHB-150S-40/50L0	100/120/150	4000/5000	>80	140	14455/14346/21683	-40°F to 122°F	IP65	150 S-L74EVK
IX-RHB-200S-40/50L0	150/180/200	4000/5000	>80	140	21683/26019/28910	-40°F to 122°F	IP65	200 S-07L46W
IX-RHB-240S-40/50L0	200/220/240	4000/5000	>80	140	28910/31801/34692	-40°F to 122°F	IP65	240 S-EJG09S
IX-RHB-300W-50L0	300	5000	>80	140	43365	-40°F to 122°F	IP65	300 S-H9WKGM



# VISTA

## VISTA SERIES LED LIGHT PANEL 2x4



### Description

With the Intrinsic VISTA Series you can depend on an energy efficient design, an ultra-slim panel light fixture which is perfect for renovations or new construction projects that require code compliant energy saving flat panel led solutions.

It also has a smart, smooth, and equal light distribution that ensures a wonderfully illuminated room.

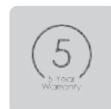
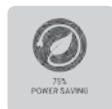
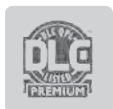
Our VISTA Series LED Light Panel is a flat LED panel ceiling lights designed for commercial and industrial applications that require long-lasting efficient lighting such as retail, healthcare, and hospitality.

### Specifications

- CCT: 3500 to 5000K
- Dimming: Optional
- Voltage: 120 to 277V, 50 to 60hz
- Efficacy: 140Lm Per Watt
- Operating Temp: 50°F to 104°F
- IP Rating: IP20
- Power factor: >0.95
- DLC Listing: Premium
- Lifetime: 50,000 hours
- Warranty: 5 years

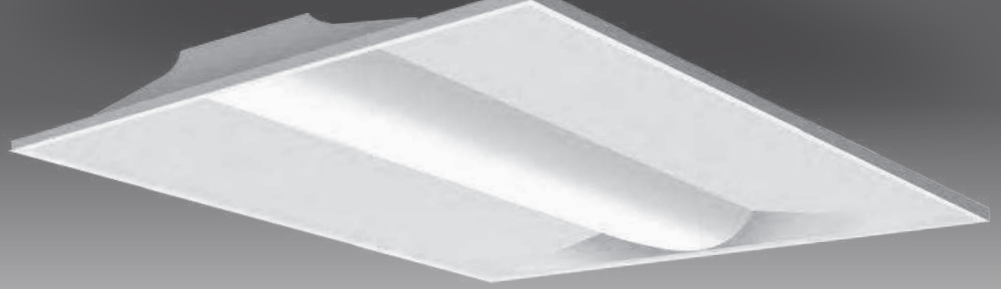
### Fixture Details

Product Number	Size	Watts (Selectable)	CCT(K) (Selectable)	CRI	Efficacy Lm (W)	Lumen Output Temperature (lm)	Operating Temperature	IP	DLC Product ID
IX-FPBL-14-20/30/40-CCT	1' x 4'	20/30/40	3500/4000/5000	80+	140	2800/4200/5600	50°F to 104°F	IP20	S-0M89ET
IX-FPBL-22-20/30/40-CCT	2' x 2'	20/30/40	3500/4000/5000	80+	140	2800/4200/5600	50°F to 104°F	IP20	S-5WQRKE
IX-FPBL-24-30/40/50-CCT	2' x 4'	30/40/50	3500/4000/5000	80+	140	4200/5600/7000	50°F to 104°F	IP20	S-ORDALS
IX-FPBL-24-30-40L0	2' x 4'	30	4000	80+	140	5600	50°F to 104°F	IP20	S-6UINLP



# STRATA

## TROFFER LIGHT



### Description

IntrinsiX STRATA Series sets the new standard for all LED Troffer Lighting. It offers 3 field selectable color temperatures:(3500K, 4000K, 5000K).

The STRATA also offers 3 field selectable wattages (24W/36W/45W) making the STRATA the best option for new construction or renovation.

The Intrinsix STRATA has several advantages over conventional lighting sources, including low maintenance and blending into the ceiling.

These lamps are also less prone to glare than other lighting sources. These are especially helpful in a location with a dropped ceiling like office spaces, basements and garages.

### Specifications

- Voltage: 120V to 277V
- Ultra Thin Design: 2.16in (55mm) height
- Efficacy: 130Lm/W
- Dimming: 0 to 10V
- Power Factor: >0.90
- Color Temp: Selectable 3500K, 4000K, 5000K
- DLC: Premium
- Lifetime: 50,000 hours
- Warranty: 5 years

### Fixture Details

Product Number	Size	Watts (Selectable)	CCT(K) (Selectable)	Dimmable	Tunable	Efficacy	Voltage	Options	DLC Product ID
IX-3TRS-22-24/30/36-35/40/50LO	2' x 2'	20/30/36W	3500/4000/5000	0 to 10V	Yes	130	120 to 277V	EM= Battery backup	PLSEGY0RZRMG
IX-3TRS-24-24/36/45-35/40/50LO	2' x 4'	24/36/45W	3500/4000/5000	0 to 10V	Yes	130	120 to 277V	EM= Battery backup	PLITI27P8TJ4





# ASTRAL

## LED TROFFER RETROFIT



### Description

With an integrated PIR Sensor, the IntrinsicX ASTRAL LED Troffer Retrofit offers options for Bluetooth mesh system or occupancy, with both having daylight harvesting.

Auto CCT changing by customized setting helps the user to be in control of the energy usage.

The IntrinsicX ASTRAL allows for easy installation using existing housing of most 2x4 or 2x2 fixtures.

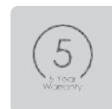
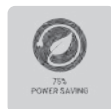
With the two different integrated sensor (Bluetooth NLC or Occupancy PIR), you are saving money with an upgrade instead of changing the whole fixture.

### Specifications

- CCT: 3500K, 4000K, 5000K
- Dimming: 0 to 10V
- Voltage: 120 to 277V
- Efficacy: 130Lm Per Watt
- Operating temp: -4°F to 122°F
- IP Rating: IP20
- Power factor: <0.90
- Lifetime: 50,000 hours
- Warranty: 5 years

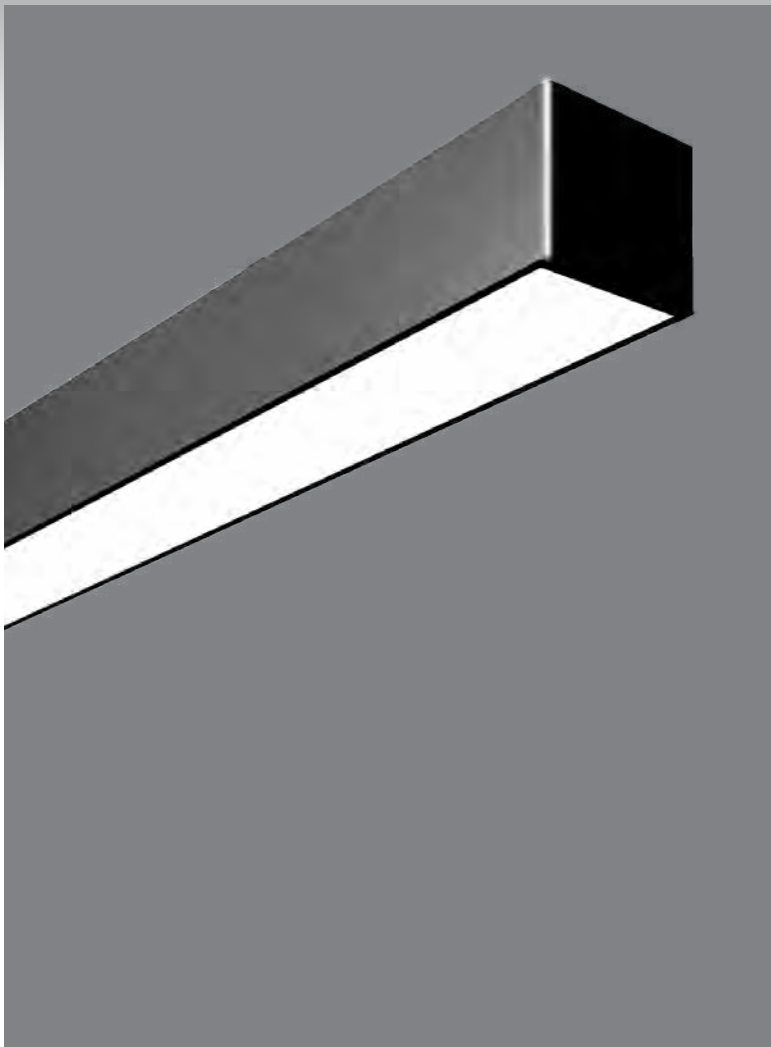
### Fixture Details

Product Number	Size	Watts (Selectable)	CCT(K) (Selectable)	CRI	Efficacy Lm (W)	Lumen Output Temperature (lm)	Operating Temperature	IP	Bluetooth Mesh Capable	DLC Product ID
IX-TRS-NLC-22-24/36-35/40/50LO	2' x 2'	24/36	3500/4000/5000	>83	130	3120/4680	-4°F to 122°F	IP20	Yes	S-BYJAU5
IX-TRS-NLC-24-36/42/50-35/40/50LO	2' x 4'	36/42/50	3500/4000/5000	>83	130	4680/5460/6500	-4°F to 122°F	IP20	Yes	S-G75PBL
IX-TRS-PIR-22-24/36-35/40/50LO	2' x 2'	24/36	3500/4000/5000	>83	130	3120/4680	-4°F to 122°F	IP20	No	S-E7LJMP
IX-TRS-PIR-24-36/42/50-35/40/50LO	2' x 4'	36/42/50	3500/4000/5000	>83	130	4680/5460/6500	-4°F to 122°F	IP20	No	S-X8PG9R



# LINEA X

## ARCHITECTURAL STRIP FIXTURE



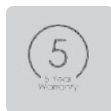
### Specifications

- 120V to 277V
- Direct Luminaire
- Fixtures offered in 4ft (40W) and 8ft (70W)
- Watt and CCT changeable
- Premium Black or White Finish
- Sturdy aluminum body with a plastic diffuser
- Energy-saving high color rendering lighting (>80 CRI)
- Emergency Battery Backup options available\*
- High efficiency LED
- Independently modular direct luminaire
- Up to 1300 Lumens per foot
- Suspended & Surface Mount options available
- Unique end cap simplifies installation, seamless continuous runs or individuals
- Specially designed light source with PC diffuser producing soft light
- Varies connection pattern with "I", "L" crossing" light corner
- Universal 0 to 10 dimming
- Optional modular connection patterns available (L: 20W, T: 30W, X: 40W)
- Warranty: 5 years

### Fixture Details

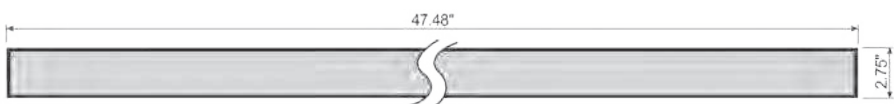
Model	Color	Length	Wattage	K	Voltage
LuXurio Architectural Strip Fixtures					
L-ASF04-40W-35/40/50L0-BK	Black	4ft	40W	3500/4000/5000K	120 to 277V, ETL
L-ASF04-40W-35/40/50L0-WH	White	4ft	40W	3500/4000/5000K	120 to 277V, ETL
L-ASF08-70W-35/40/50L0-BK	Black	8ft	70W	3500/4000/5000K	120v277V, ETL
L-ASF08-70W-35/40/50L0-WH	White	8ft	70W	3500/4000/5000K	120 to 277V, ETL

### Mounting Options:

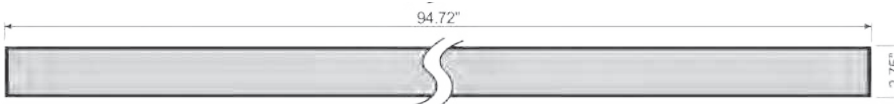


## Strip Fixture Dimensions

4FT LWH: 47.48" x 2.75" x 3.15" (1206 x 70 x 80mm)



8FT LWH: 94.72" x 2.75" x 3.15" (2406 x 70 x 80mm)



Model	Shape	Wattage
L-ASF04-20W-35/40/50L0-BK -L	L-Shape	20W
L-ASF04-30W-35/40/50L0-BK -T	T-Shape	30W
L-ASF04-40W-35/40/50L0-BK -X	X-Shape	40W

## Fixture Accessories Details

Model	Color	Length	Wattage	K	Voltage
<b>LuXurio Architectural Strip Fixture L Brackets</b>					
L-ASFL-20W-35/40/50L0-BK	Black		20W	3500/4000/5000K	120v277V, ETL
L-ASFL-20W-35/40/50L0-WH	White		20W	3500/4000/5000K	120v277V, ETL
<b>LuXurio Architectural Strip Fixture T Brackets</b>					
L-ASFT-30W-35/40/50L0-BK	Black		30W	3500/4000/5000K	120v277V, ETL
L-ASFT-30W-35/40/50L0-WH	White		30W	3500/4000/5000K	120 to 277V, ETL
<b>LuXurio Architectural Strip Fixture X Brackets</b>					
L-ASFX-40W-35/40/50L0-BK	Black		40W	3500/4000/5000K	120 to 277V, ETL
L-ASFX-40W-35/40/50L0-WH	White		40W	3500/4000/5000K	120 to 277V, ETL
<b>LuXurio Architectural Strip Fixture Surface Mount Kits</b>					
L-ASF04-SMK-BK	Black	4ft			
L-ASF04-SMK-WH	White	4ft			
L-ASF08-SMK-BK	Black	8ft			
L-ASF08-SMK-WH	White	8ft			
<b>LuXurio Architectural Strip Fixture Linkable Bracket</b>					
L-ASF-4FTB		4ft			
L-ASF-8FTB		8ft			
<b>LuXurio Architectural Strip Fixture Power Cord 18awg.</b>					
L-ASF-PC-Black	Black	8ft			
L-ASF-PC-White	White	8ft			
<b>LuXurio Architectural Strip Fixture Canopy Bracket for Aircraft Cable</b>					
L-ASF-CB-Black	Black				
L-ASF-CB-White	White				

## Accessories

### Surface Mount Kits



### Suspended Canopy and aircraft cable



### Power Cord



### Linkable Bracket



### Suspended air craft cable



# LINEAR

## RECESSED SLOT FIXTURE



### Specifications

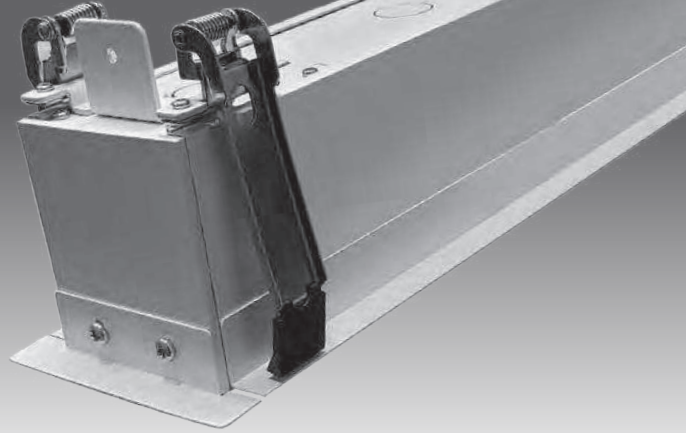
- 120V to 227V
- Direct & Indirect
- Fixtures offered in 4ft (40W) and 8ft (70W)
- Brackets offered in 20W, 30W and 40W
- Watt and CCT changeable options
- Matte Black or Gloss White
- Sturdy aluminum body with a plastic diffuser
- Energy-saving high color rendering lighting >80 CRI
- Single and double emission hanging luminaire
- High efficiency LED
- Emergency Battery Backup options available\*
- Independently modular Direct luminaires
- Up to 1300 Lumens per foot
- Recessed Mount
- Working voltage 120-347V
- A series single CCT
- B series 3-CCT changeable
- Unique end cap simplifies installation, seamless continuous runs or individuals
- Specially designed light source with PC diffuser producing soft light
- Varies connection pattern with "I", "L", "crossing" light corner
- Universal dimming : 0 to 10 dimming ,ELV, Dali, Triac
- Bluetooth Mesh: 2.4G wireless control
- Emergency backup available
- Warranty: 5 years

### Fixture Details

Model Number	Product Length	Power (Wattage)	CCT (K) Optional	Voltage	CRI	Lumen Output Temperature (Lm)	Efficacy Lm/W	Dimming
L-RMASF04-40W-35/40/50L0-BK	4ft	40W	3500/4000/5000K	120 to 347V, ETL	>80	2600 to 9100	117Lm/W	0 to 10V
L-RMASF04-40W-35/40/50L0-WH	4ft	40W	3500/4000/5000K	120 to 347V, ETL	>80	2600 to 9100	130Lm/W	0 to 10V
L-RMASF08-70W-35/40/50L0-BK	8ft	70W	3500/4000/5000K	120 to 347V, ETL	>80	2600 to 9100	117Lm/W	0 to 10V
L-RMASF08-70W-35/40/50L0-WH	8ft	70W	3500/4000/5000K	120 to 347V, ETL	>80	2600 to 9100	130Lm/W	0 to 10V



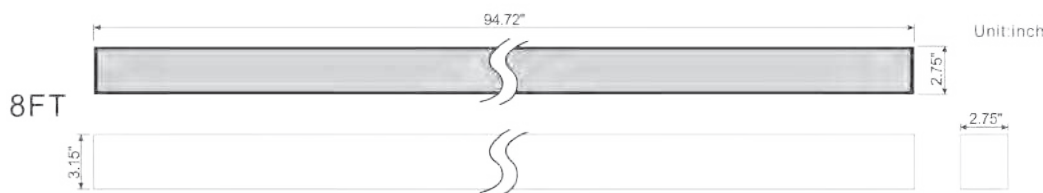




## Strip Fixture Dimensions



**4FT LWH:**  
47.48" x 2.75" x 3.15"



**8FT LWH:**  
94.72" x 2.75" x 3.15"

## Mounting Kits



### Recessed Mount Kits

L-ASF04-RMK-BK	Black	4ft
L-ASF04-RMK-WH	White	4ft
L-ASF08-RMK-BK	Black	8ft
L-ASF08-RMK-WH	White	8ft

### Recessed Mount Kits OPTION

L-ASF04-RMK2-BK	Black	4ft
L-ASF04-RMK2-WH	White	4ft
L-ASF08-RMK2-BK	Black	8ft
L-ASF08-RMK2-WH	White	8ft

## Accessories



**Linkable Bracket**  
L-ASF-4FTB 4ft  
L-ASF-8FTB 8ft



**Power Cord**  
L-ASF-PC-Black 8ft  
L-ASF-PC-White 8ft

# HORIZON

## LED STRIP LIGHTS



### Description

The Intrinsic HORIZON Series, including 4ft and 8ft LED linear strips are ideal for replacing traditional fluorescent lamp found in commercial spaces such as schools, warehouses, shopping malls and offices.

They have multiple advantages. Easy installation: surface, hanging or continuous row mount.

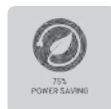
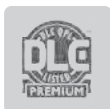
Available in standard and high voltage. 0 to 10V dimming. Motion sensor and emergency battery backup are optional.

### Specifications

- Voltage: 100 to 277V
- Dimming: 0 to 10V
- Efficacy: 130Lm/W
- IP Rating: IP44
- Operation Temp: -4°F to 86°F
- Power Factor: >0.9
- DLC Listing: Premium
- Lifetime: 50,000 hours
- Warranty: 5 years

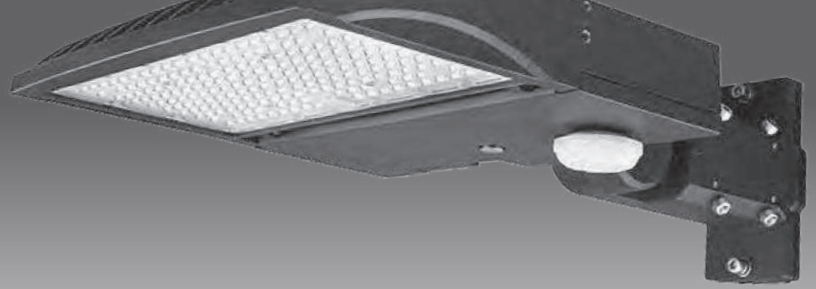
### Fixture Details

Product Number	Size	Power Watts	CCT(K) Optional	Dimmable	Voltage	Efficacy	DLC Product ID
DM-ST4FT40W-35/40/50LO	4ft	40	3500/4000/5000K	0 to 10V	120V to 277V	130	PG4Q3YWH
DM-ST8FT64W-40K	8ft	64	4000K	0 to 10V	120V to 277V	130	P4VMY414
DM-ST8FT64W-50K	8ft	64	5000K	0 to 10V	120V to 277V	130	PPPNRTV4



# SIRIUS

## SHOE BOX LIGHT



### Description

The IntrinsicX SIRIUS Shoe Box Light offers an energy efficient eco-friendly option for commercial uses, such as large walkways, outside office buildings and parking lots. The prime goal is safety and security for your property and people.

The SIRIUS Shoe Box allows you to have complete control over the amount of light, with the option of adding advanced lighting controls.

They are high quality, durable and energy efficient light that is guaranteed to last at least 50,000 hours.

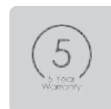
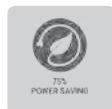
### Specifications

- CCT: 5000K
- Dimming: 0 to 10V
- Voltage: 120 to 277V, 50 to 60hz
- Efficacy: 140Lm Per Watt
- Operating Temp: -58°F to 122°F (without sensor)
- Operating Temp: -31°F to 122°F (with sensor)
- IP Rating: IP65
- Power factor: ≥0.9
- Direct Arm or Slipfitter Mount
- DLC Listing: Premium
- Lifetime: 50,000 hours
- Warranty: 5 years

15

### Fixture Details

Product Number	Watts (Selectable)	CCT (K)	CRI Lm/W	Efficacy	Lumen Output (Lm)	Operating temperatures		IP	DLC Product ID
						Without sensor	With Sensor		
IX-SBLX-60-50L0	60/50/40	5000	>70	140	8,400/7,000/5,600	-58°F to 122°F	-31°F to 122°F	IP65	TBA
IX-SBLX-150-50L0	150/120/100	5000	>80	140	21,000/16,800/14,000	-58°F to 122°F	-31°F to 122°F	IP65	S-9SF3GD
IX-SBLX-300-50L0	300/240/200	5000	>80	140	42,000/33,600/28,000	-58°F to 122°F	-31°F to 122°F	IP65	S-XKPW40



# COMET

## LED SHOEBOX (AREA LUMINAIRE)



### Description

The IntrinsicX COMET combines the duo of architectural form and versatility to make it an excellent choice for new construction or for retro-fit applications. It is offered in a variety of wattages (100/150/180/240/300) allowing for maximum flexibility in all types of applications.

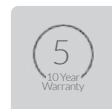
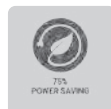
The high output LEDs and custom engineered optics provide excellent uniformity and efficiency, meeting DLC qualifications. It is designed to replace the existing HID fixtures up to 1000W.

### Specifications

- CCT: 5,000K Selectable
- Dimming: Optional
- Voltage: 100 to 277V, 50 to 60Hz
- Efficacy: 130Lm Per Watt
- Operating Temp: -40°F to 131°F
- IP Rating: IP66
- Power Factor: >0.95
- DLC Listing: Premium
- Lifetime: 50,000 hours
- Warranty: 10 years

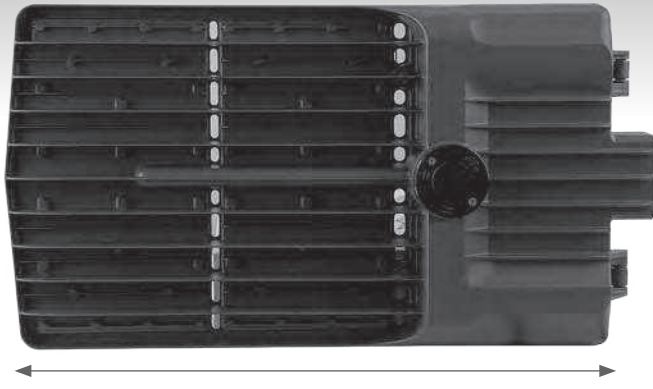
### Fixture Details

Product Number	Watts	CCT(K)	CRI	Efficacy Lm/W	Lumen Output (Lm)	Operating Temperature	Sensor Base	IP	DLC Product ID
IX-SBL-100-50L0	100	5000	70	130	15,000	-40° F to 131° F	Photocell/Shorting Cap	IP66	S-IHX15K
IX-SBL-150-50L0	150	5000	70	130	22,500	-40° F to 131° F	Photocell/Shorting Cap	IP66	S-3Z207G
IX-SBL-185-50L0	185	5000	70	130	26,825	-40° F to 131° F	Photocell/Shorting Cap	IP66	S-0JKD86
IX-SBL-240-50L0	240	5000	70	130	36,000	-40° F to 131° F	Photocell/Shorting Cap	IP66	S-1RHXVL
IX-SBL-300-50L0	300	5000	70	130	45,000	-40° F to 131° F	Photocell/Shorting Cap	IP66	S-4FP68M
IX-SBLZ-150-50L0	150	5000	70	130	22,500	-40° F to 131° F	Zhaga Base	IP66	S-3Z207G
IX-SBLZ-185-50L0	185	5000	70	130	26,825	-40° F to 131° F	Zhaga Base	IP66	S-0JKD86
IX-SBLZ-240-50L0	240	5000	70	130	36,000	-40° F to 131° F	Zhaga Base	IP66	S-1RHXVL

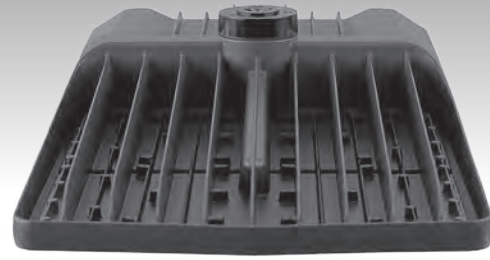




## Product Dimensions



A



B



C

Wattage	A (in)	B (in)	C (in)
100 W - 185 W	14.06	12.22	3.35
240 W - 300 W	22.84	12.22	3.54

## Mounting Options

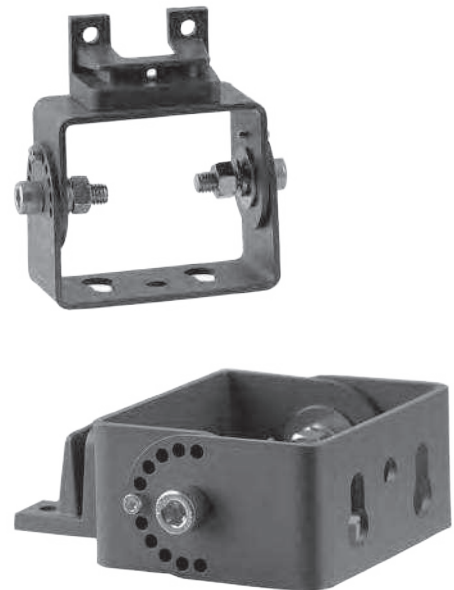
Slip Fitter Pole Mount



Square & Round Pole Mount

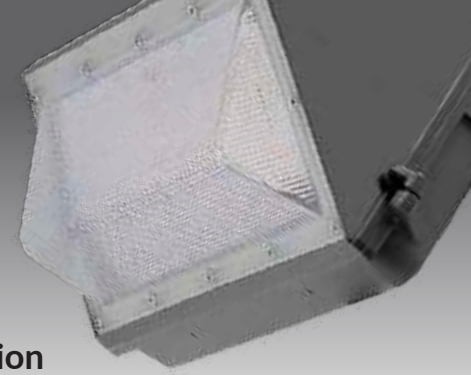


Trunnion T Bar Pole Mount



# ECLIPSE SEMI

## SEMI CUT WALL PACK



### Description

The ECLIPSE LED Semi Cut Wall Pack is the best in its class for power efficiency when it comes to wall-mounted security. They are great for a range of commercial applications including parking lots, shopping malls, hospitals, walkways, and any other outdoor areas in need of adequate lighting. With the use of the IntrinsicX ECLIPSE cut off wall pack lights, you get the incredible power of LED lights combined with the sturdy construction needed for outdoor lighting.

The ECLIPSE provides security lighting with control over the energy efficiency with its integrated Photocell capabilities. These security lights are more economical, replacing the HID or HPS lights, consuming less electricity and giving you even brighter lighting compared to conventional lights.

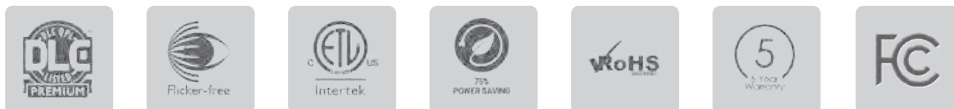
### Specifications

- Photocell: Integrated
- Voltage: 100 to 277V, 50 to 60Hz
- IP Rating: IP65
- Operating Temperature: -20°F to 140°F
- Power Factor: >0.95
- DLC: Premium
- Lifetime: 50,000 hours
- Warranty: 5 years



### Fixture Details

Product Number	Power (Watts)	CCT (K) Optional	CRI	Efficacy (lm/W)	Lumens Output Temperature (lm)	Operating Temperature	IP Rating	DLC Product ID
IX-SCWP-48-50LO	48W	2700 to 5700K	70+	110	5280 Lm	-20°F to 140°F	IP65	PLow8WFD0MSN
IX-SCWP-60-50LO	60W	2700 to 5700K	70+	110	6600 Lm	-20°F to 140°F	IP65	PL5NF3NEDD1X
IX-SCWP-80-50LO	80W	2700 to 5700K	70+	110	8800Lm	-20°F to 140°F	IP65	PLSOPZ74PMK9
IX-SCWP-100-50LO	100W	2700 to 5700K	70+	110	11000Lm	-20°F to 140°F	IP65	PLUHGWKPA698
IX-SCWP-130-50LO	130W	2700 to 5700K	70+	110	143ACB00Lm	-20°F to 140°F	IP65	TBA



# ECLIPSE

## FULL CUT WALL PACK



### Description

The ECLIPSE LED Full Cut Wall Pack is the best in its class for power efficiency when it comes to wall-mounted security. They are great for a range of commercial applications including doorways, walkways, and any other outdoor areas in need of adequate lighting. With the use of the IntrinsicX ECLIPSE cut off wall pack lights, you get the incredible power of LED lights combined with the sturdy construction needed for outdoor lighting.

The ECLIPSE provides security lighting with control over the energy efficiency with its integrated Photocell capabilities. These security lights are more economical, replacing the HID or HPS lights, consuming less electricity and giving you even brighter lighting compared to conventional lights.

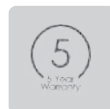
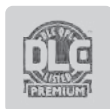
### Specifications

- Photocell: Integrated
- Dimming: 0 to 10V
- Voltage: 120 to 277V, 50 to 60Hz
- IP Rating: IP65
- Operating temperature: -20°F to 140°F
- Power Factor: >0.95
- DLC: Premium
- Lifetime: 50,000 hours
- Warranty: 5 years



### Fixture Details

Product Number	Power (Watts)	CCT (K) Optional	CRI	Efficacy (Lm/W)	Lumens Output Temperature (Lm)	Operating Temperature	IP Rating	DLC Product ID
IX-FCWP-0048-50L0	48W	2700 to 5700K	70+	110	5280	-20°F to 140°F	IP65	PL5B5Q6124ZP
IX-FCWP-0060-50L0	60W	2700 to 5700K	70+	110	6600	-20°F to 140°F	IP65	PL65KNXVWIKC
IX-FCWP-0080-50L0	80W	2700 to 5700K	70+	110	8800	-20°F to 140°F	IP65	PLY3PUCC8HPA



# ECLIPSE MINI

## MINI WALL PACK



### Description

The IntrinsicX ECLIPSE LED Mini Wall Pack is the best in its class for power efficiency when it comes to wall-mounted security. With our selection of LED mini wall pack lights, you get powerful lighting that is just right for your smaller space.

When you need less lighting for a smaller space, such as a doorway, hallway, or to increase the visibility of important information, Eclipse Mini LED wall pack lights are a great solution.

With the use of the IntrinsicX ECLIPSE Mini wall pack lights and the integrated Photocell capabilities you have control, you get the incredible power of LED lights combined with the sturdy construction needed for outdoor lighting.

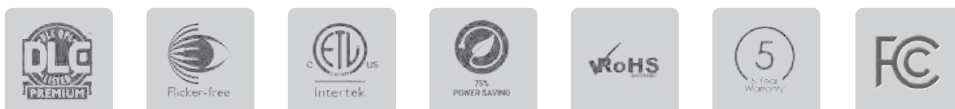
### Specifications

- Photocell: Integrated
- Voltage: 100 to 277V, 50 to 60Hz.
- Efficacy: 135Lm Per Watt
- Operating Temp: -4°F to 113°F
- IP Rating: IP65
- Power Factor: >0.90
- DLC Listing: Premium
- Lifetime: 50,000 Hours
- Warranty: 5 years



### Fixture Details

Product Number	Power (Watts)	CCT (K) Optional	CRI	Efficacy (lm/W)	Lumens Output Temperature (lm)	Operating Temperature	IP Rating	DLC Product ID
IX-MWP03-15W-50L0	15W	5000K	80+	-	1950	-4°F to 113°F	IP65	PT6E9GT1
IX-MWP03-20W-50L0	20W	5000K	80+	135	2700	-4°F to 113°F	IP65	PKKFT7ZW
IX-MWP03-30W-50L0	30W	5000K	80+	130	3900	-4°F to 113°F	IP65	PCIZYK2G





# COMET MINI

## LED FLOODLIGHT



### Description

The IntrinsicX COMET Mini LED Floodlight is the best in its class for power efficiency when it comes to security. They are great for a range of commercial applications including Factory floor, libraries, public parks, train stations and any other outdoor areas in need of adequate lighting.

The Knuckle mount with an optional Trunnion mount the possibilities are endless.

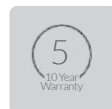
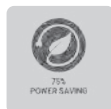
With the use of the IntrinsicX COMET Mini LED Floodlights, you get the incredible power of LED lights combined with the sturdy construction needed for outdoor lighting.

### Specifications

- Voltage: 100 to 277V, 50 to 60Hz
- Operating Temp: -4°F to 113°F
- IP Rating: IP65
- Power Factor: >0.90
- DLC Listing: Premium
- Lifetime: 50,000 hours
- Warranty: 10 years

### Fixture Details

Product Number	Power Watts	CCT(K) Optional	Trunnion Mount Optional	CRI Lm/W	Lumen Output (Lm)	Operating Temperature	IP Rating	DLC Product ID
DL-FL06-15W-50LO-KM	15W	5000K	DL-MFL-TM	80+	1730Lm	-4°F to 113°F	IP65	TBA
DL-FL06-30W-50LO-KM	20W	5000K	DL-MFL-TM	80+	3750Lm	-4°F to 113°F	IP65	TBA
DL-FL06-30W-30/40/50LO-KM	30W	5000K Selectable	DL-MFL-TM	80+	3750Lm	-4°F to 113°F	IP65	TBA
DL-FL06-50W-50LO-KM	50W	5000K	DL-MFL-TM	80+	6250Lm	-4°F to 113°F	IP65	TBA



# SOFCAN

## CANOPY RETROFIT



### Description

Intrinsix's SOFCAN Canopy Retrofit is the perfect choice when considering retrofitting your existing canopy soffits as well as many other canopy applications such as drive-throughs, loading docks and store fronts.

This unique system comes wattage selectable (20W/30W/40W) allowing for user friendly operation. Standard 15"x15" beauty plate makes for a smooth and seamless retrofit.

### Specifications

- Beauty Plates: 12in/15in/18in/24in
- Color: 5000K
- Voltage: 120V to 277V
- Efficiency: 140Lm/W
- IP Rating: IP65
- Frosted Lens
- DLC Premium
- Lifespan: 50,000 hours
- Warranty: 5 years

### Fixture Details

Product Number	Power (Watts)	CCT (K) Optional	Efficacy (Lm/W)	CRI	Lumen Output Temperature (Lm)	Operating Temperature	IP Rating	DLC Product ID
IX-SCR-15-20/30/40-50LO	20/30/40	5000K	140LM/W	80+	2800/4200/5600	-4°F to 131°F	IP65	P2MWBSLL

### Beauty Plate Options

Wrap Product Number	Inches
IX-SCR-12WBP	12
IX-SCR-15WBP	15
IX-SCR-18WBP	18
IX-SCR-24WBP	24



# PIR SENSOR

## SIDE MOUNT



### Description

Side Mount PIR Sensor can be mounted into a 1/2" NPT knockout on most indoor lighting fixtures and offers multi-level control based on motion and daylight contribution.

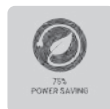
Most commonly used in indoor high and low bay lighting applications.

### Specifications

- Detection Zone / Angle: Low Bay Lens: Maximum coverage 48' dia. from 8 to 20' height / 360°
- Detection Zone / Angle: High Bay Lens: Maximum coverage 60' dia. from 8 to 50' height / 360°
- Voltage: 120V-277V 50/60Hz
- Mounting Height: Low Bay Lens - 8 to 20'
- Mounting Height: High Bay Lens - 8 to 50'
- Operating Temp: -40°F to 167°F
- Fixture Compatibility: A51, CL, HBL, LSL2, PGC and PGR Series
- UL listing: UL773A
- Warranty: 5 years

### Fixture Details

Product Number	Type	Power (Voltage)	Maximum Coverage	Mounting Height	Operating Temperature	UL Listing
L-HB-BIPiR-1/2KO	Low Bay	120 to 277V 50/60Hz	48' (8-20' height @ 360°)	8' to 20'	-40°F to 167°F	UL773A
L-HB-BIPiR-1/2KO	High Bay	120 to 277V 50/60Hz	60' (8-20' height @ 360°)	8' to 20'	-40°F to 167°F	UL773A



# INTRINSIX



[www.intrinsixlighting.com](http://www.intrinsixlighting.com)



224-353-4084



[sales@intrinsixlighting.com](mailto:sales@intrinsixlighting.com)



9550 W. Higgins Road, Rosemont, IL 60018



Reach out to Intrinsix to meet  
a friendly representative today by calling

**224-353-4084**